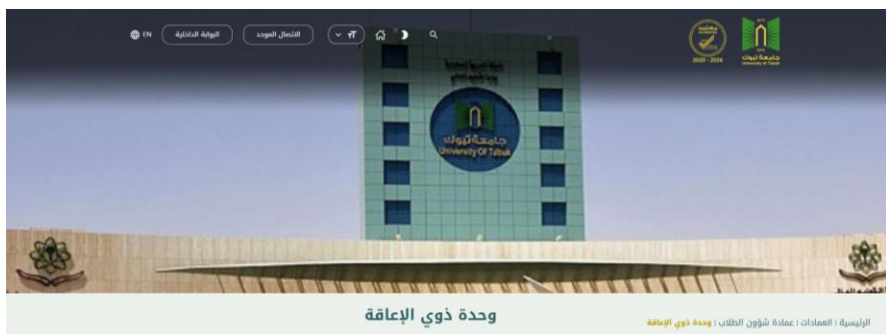


Disability Policy

The Unit for Persons with Disabilities at the University of Tabuk, operating under the Deanship of Student Affairs, is dedicated to supporting students with disabilities by providing comprehensive services to facilitate their academic and social integration within the university community.

<https://www.ut.edu.sa/ar/Deanship/student-affairs/unit-people-disabilities/Pages/default.aspx>



Vision: To lead in delivering student-centered, advisory, and guidance services for students with disabilities across Saudi universities.

Mission: To assist students with disabilities by removing barriers in all university-related matters, offering student services, training, and counseling to promote their academic success and personal development.

Objectives:

- Establish modern foundations for the care of students with disabilities at the University of Tabuk.
- Provide integrated advisory and educational services in a centralized location, saving students time and effort in accessing academic programs that enhance their social, interactive, and academic skills.
- Develop and maintain a comprehensive, up-to-date database of students with disabilities across all university campuses.

- Appoint representatives in each college and branch to address the needs of students with disabilities.
- Conduct advanced research to improve support for students with disabilities.
- Offer training for staff working with students with disabilities to enhance their competencies, utilizing expertise from relevant fields.
- Organize seminars and workshops aimed at promoting personal, cognitive, and skill development for both students and professionals.
- Forge partnerships with organizations that provide direct or indirect support to benefit students with disabilities.

Director's Message: Prof. Hend Al-Hadi Al-Qahtani, the unit's director, envisions transforming the Tabuk region into a leader in services for students with disabilities. The unit emphasizes engaging students in various activities and programs, fostering community responsibility through collaborations with relevant entities, and enhancing self-awareness to boost academic success. The goal is to cultivate a university community where students are valued for their abilities.

Services Offered:

- Academic Support
- Curriculum and Exam Adaptations
- Psychological and Social Support
- Assistive Technologies
- Financial Assistance

Through these initiatives, the Unit for Persons with Disabilities strives to create an inclusive and supportive environment that empowers all students to achieve their full potential.

The university offers a variety of services tailored to support students with disabilities, including mentoring programs. For more information, please refer to the People with Disabilities Unit Manual and watch the introductory video that highlights the services provided by the Disability Unit.

<https://www.ut.edu.sa/ar/Deanship/student-affairs/unit-people-disabilities/Documents/%D8%AF%D9%84%D9%8A%D9%84%20%D9%88%D8%AD%D8%AF%D8%A9%20%D8%B0%D9%88%D9%8A%20%D8%A7%D9%84%D8%A7%D8%B9%D8%A7%D9%82%D8%A9.pdf>

The University of Tabuk is committed to creating an inclusive environment by providing accessible facilities for individuals with disabilities throughout the campus. Key features include ramps and elevators that enhance mobility within buildings, as well as accessible restrooms designed to meet the needs of all users. The university also offers assistive technology to promote learning and accessibility, while clearly marked and well-maintained pathways ensure safe navigation across the campus. Additionally, to further enhance convenience, the university provides designated parking permits for individuals with disabilities, ensuring accessible parking options are available

For Buildings:

▪ Ramps and Elevators:

At the University of Tabuk, ramps are being installed at building entrances, and all floors are accessible via elevators equipped with braille buttons and auditory signals

▪ Accessible Restrooms:

Restrooms designed with wider stalls, grab bars, lower sinks, and automatic doors.



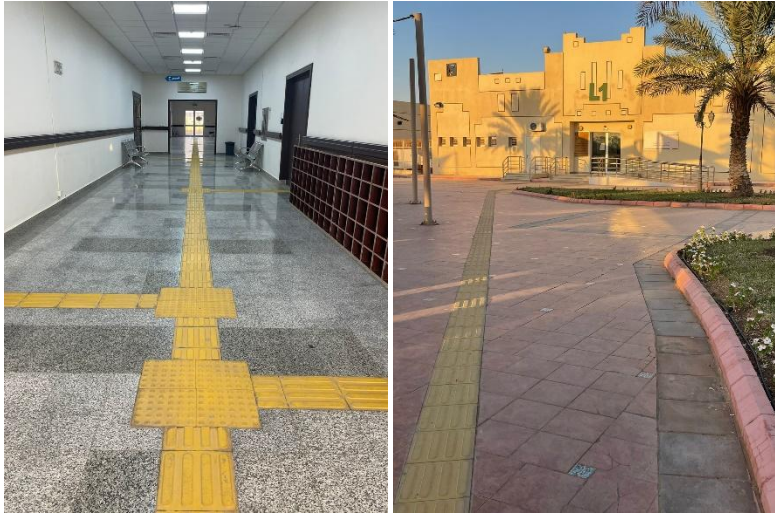
Assistive Technology:

Example: Providing screen readers, magnification software, and hearing loops in classrooms and libraries (see page 24)

<https://www.ut.edu.sa/ar/Deanship/student-affairs/unit-people-disabilities/Documents/%D8%AF%D9%84%D9%8A%D9%84%20%D9%88%D8%AD%D8%AF%D8%A9%20%D8%B0%D9%88%D9%8A%20%D8%A7%D9%84%D8%A7%D8%B9%D8%A7%D9%82%D8%A9.pdf>

Accessible Pathways:

There are smooth, wide, and non-slip pathways with tactile paving for individuals with visual impairments.



For Transportation:

Parking Permits for People with Disabilities:

<https://www.ut.edu.sa/ar/E-Services/Pages/Services34.aspx>

<https://www.ut.edu.sa/ar/Deanship/student-affairs/Documents/%D9%86%D8%B8%D8%A7%D9%85%20%D8%AD%D8%AC%D8%B2%20%D8%A7%D9%84%D9%85%D9%88%D8%A7%D9%82%D9%81.pdf>

